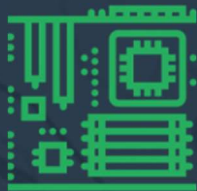
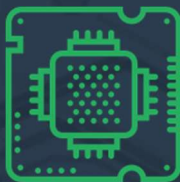


ANATEC

Your Distribution Partner for
Electronic Components, Displays,
Development Tools and
Power & Networking Solutions



LINECARD 2022

ELECTRONIC COMPONENTS / POWER SOLUTIONS



Microcontrollers

8051
ARM Cortex M0/23/4/7
ARM7/9
KM101 (8-Bit)
KM103 (32-Bit)

Smart Home-ICs

Cloud Security-ICs



Wi-Fi & Bluetooth SoCs and Modules

IEEE 802.11 b/g/n
BR/EDR + Bluetooth LE v4.2
Bluetooth LE 5.0
PCB or IPEX antenna
Xtensa® single-core LX6 CPU
Xtensa® dual-core LX6 CPU
RISC-V single-core processor



Memory

Parallel NOR FLASH
SPI FLASH
Synchronous DRAM
DDR DRAM
Low Power SRAM
Mask ROM/OTP
Multi-Chip-Package (MCP)
System-In-Package (SiP)

Sensors

Ambient Light
Proximity

NFC / RFID

Tag ICs (NFC, ISO-15693,
ISO-14443)



Audio

High End Stereo Digital Volume
Control

Crystal Oscillator IC's

Piezo & LED Drivers

Piezo Driver IC for Multi-Sound

Power Management

Solar Manager

Sensor Signal Interface

Piezoresistive / Capacitive

Time Code Receivers

AM Receiver
Dual Band AM Receiver
Time Code Receiver Modules

ASICs and ASSPs

Analog and Mixed-Signal



Tuning Fork Quartz Crystals

32 kHz, 32.768 kHz, 100 kHz, 30 kHz
- 2MHz

Low Power Tuning Fork Oscillators

32.768 kHz, 100.000 kHz

Ultra-Low Power Real Time Clock Modules

I2C, SPI, temp. compensated, AEC-
Q200

MHz AT-Cut Quartz Crystals

8 MHz - 250 MHz

MHz Clock Oscillators

32.768 kHz, 10 kHz - 225 MHz
Up to 210°C

VCXO, Voltage Controlled Oscillators

5 MHz - 40 MHz
Up to 210°C

OCXO, Oven Controlled Oscillators

10 MHz - 120 MHz
Up to 85°C



1.55V Silver Oxide Coin Cells

Low Drain, 8 - 175mAh
High Drain, 27 - 190mAh
Improved High Drain (High Pulse)

3V Lithium Coin Cells

30 - 950mAh

3.7V Rechargeable Lithium Coin Cell

100mAh

Tabbed Lithium Coin Cells

2, 3 or Isotan taps
Vertical or horizontal alignment
SMD, pin-in-hole or cable assembly

Battery Holders

Vertical or horizontal alignment
SMT or pin-in-hole assembly

3.7V Rechargeable Lithium Ion Polymer Battery Packs

33 - 2700mAh

3V Primary Lithium / Manganese Dioxide Battery

Thin - Film, 28mAh



Voltage Regulators

Voltage References

Voltage Detectors

DC/DC Converters

Power Distribution IC's

Operational Amplifiers



Power Supplies

AC/DC and DC/DC
Open Frame
Enclosed
Encapsulated
Board Mount
External Adapter
Rack Mount
Ruggedized and Hazloc

EMI/EMC Filters

Single-Phase
IEC Inlet
DC
Three-Phase Delta
Three-Phase WYE
Feed-Thru
Suppression Components
Tempest
MIL-COTS
Facility, MRI/Shielded Rooms

Uninterrupted Power Supplies

AC/AC
Mobile UPS
Rack Mount UPS

Loads

Dynamic Load



RFID Antennas

1-Axis Transponders
3-Axis Transponders (3DCoils)
Emitter Antennas & Switches
NFC Antennas
Telecoils

Inductive Components

3D Power
Common Mode Chokes
Current Transformers
DC/DC Transformers
Flyback Transformers
Gate-Drive Transformers
High Current DC Chokes
OBC Transformers
PFC Chokes
PLC Transformers
Resonant Chokes
Wireless Charging Antennas
for EV

PLC Components

Blocking Filters
Inductive Couplers

VR/AR EM Motion Tracking

Tx EM Motion Tracking Antennas
VR Sensors - Rx EM Motion Tracking

HI-REL ELECTRONIC COMPONENTS / POWER & NETWORKING SOLUTIONS



ARINC 429 Interface, Integrated Circuit (IC) Data Bus & Integrated Circuit

Line Drivers, Line Receivers, Transceivers

Discrete-to-Digital Interface IC's Surge Protection System Components

Voltage Surge Protector for Avionics

Voltage Clamp IC's

LED Lamp Driver Solutions

Bus Mapping Circuits
LED Drivers

Custom ASICs

Analog, Mixed-Signal & IF/RF IC's
Layout & Masking
IC Testing



MIL-STD-1750A Processors

SRAMs

EEPROMs

FCT/FCT-T Logic



Power Conversion Solutions

DC-DC Power Supplies
AC-DC Power Supplies
DC-AC Inverters
Uninterruptable Power Supplies
DC-DC Holdup Units
AC+DC-DC Power Supplies
VITA 62 VPX Solutions
GCU Power Supplies
Accessories

Power Management Solutions (PDU)

Networking Solutions

Ethernet Switches
USB Hubs and Storage Devices
Embedded Ethernet Switches
Media Converters
Rugged Routers

Custom Design

DEVELOPMENT TOOLS / DISPLAYS



Complete range of **Embedded Workbenches** for 8-, 16- and 32-bit microcontrollers from different chip manufacturers, consisting of **C/C++ Compiler, Debugger, Code Analysis Tools** as well as **State Machine Tools** and **Debugging and Trace Probes**

Functional safety versions available certified according to IEC 61508 (Industrial), ISO 26262 (Automotive), EN50128 (Railway), EN 50657 (Medical), IEC 62304 / ISO 25119 (Agriculture & forestry), ISO 13849 / IEC 62061 (Machinery control), IEC 61511 (Process industry) and IEC 60730 (Household appliances)



Complete range of portable **In-System Programming (ISP) programmers** designed for field-service and production ISP applications

Device family support for AVR as well as 8051, ARM and Serial EEPROMs from different chip manufacturers



Color TFT Modules

OLED Modules

Graphic Module

COG, Color STN, Monochrome

Character Modules

COG, Standard

Custom Glass LCD Panels



Standard, Bar Type, Sunlight Readable and **Custom Glass TFTs**

Standard OLEDs

E-Paper Displays

Touch Panels and **Multi-Touch TFT-LCD Modules**

LED Light Panels

COMPANY

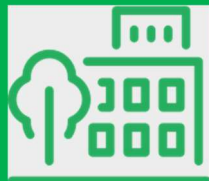
ANATEC AG, founded in 1978, is well known by Swiss customers as distributor with excellent technical support for Electronic Components, Displays, Development Tools and Power & Networking Solutions. With an efficient, reliable team, we understand ourselves as a design-in distributor.

As a distributor and representative of leading manufacturers we guarantee our customers professional service, regarding design-in competence, logistic solutions and aftersales support.

To maintain the high quality level, we are ISO 9001 certified since 1997.



Consulting / Design-in
Competence



Logistic Solutions



Aftersales Support



Seminars

Contact



Anatec AG
Sumpfstrasse 7
CH - 6312 Steinhausen
Switzerland
www.anatec.ch



info@anatec.ch



+41 41 748 32 32